

Dear All,

We are proud to announce that the Panoramic Power™ service has been updated with new features.

## Normalization and Standard Lines

The new version introduces a new comparison feature – Normalization and Standard Lines. This feature is available via a new user interface in the **Performance** screen.

Normalization is used to compare the consumption of different sites, usage types or individual devices. The following normalization factors are available by default in this version:

- Energy per unit area (square foot/square meter)
- Energy consumed during working or non-working hours

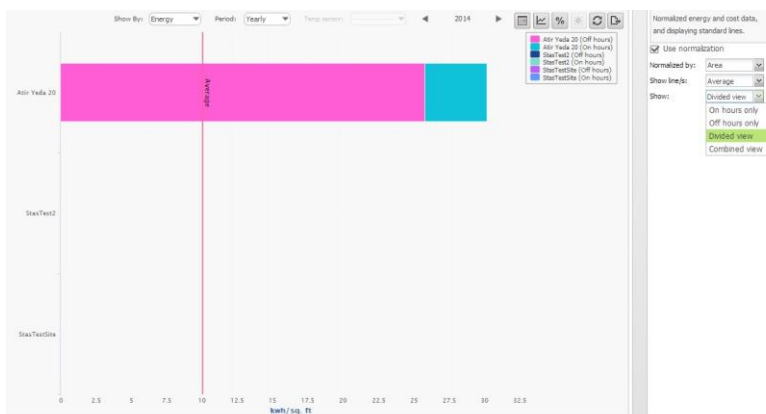
This feature allows you to quickly detect abnormal consumption that cannot be otherwise discovered – such as a relatively small site consuming a large amount of energy per square foot, or a relatively high cost during non-operating hours.

The consumption of various entities can be compared against a target called *standard line*. The following standard lines are available in this version:

- Median,
- Median 25
- Average

For example, you can compare the consumption registered in a store or in a site consisting of multiple stores, to the average consumption of the entire chain.

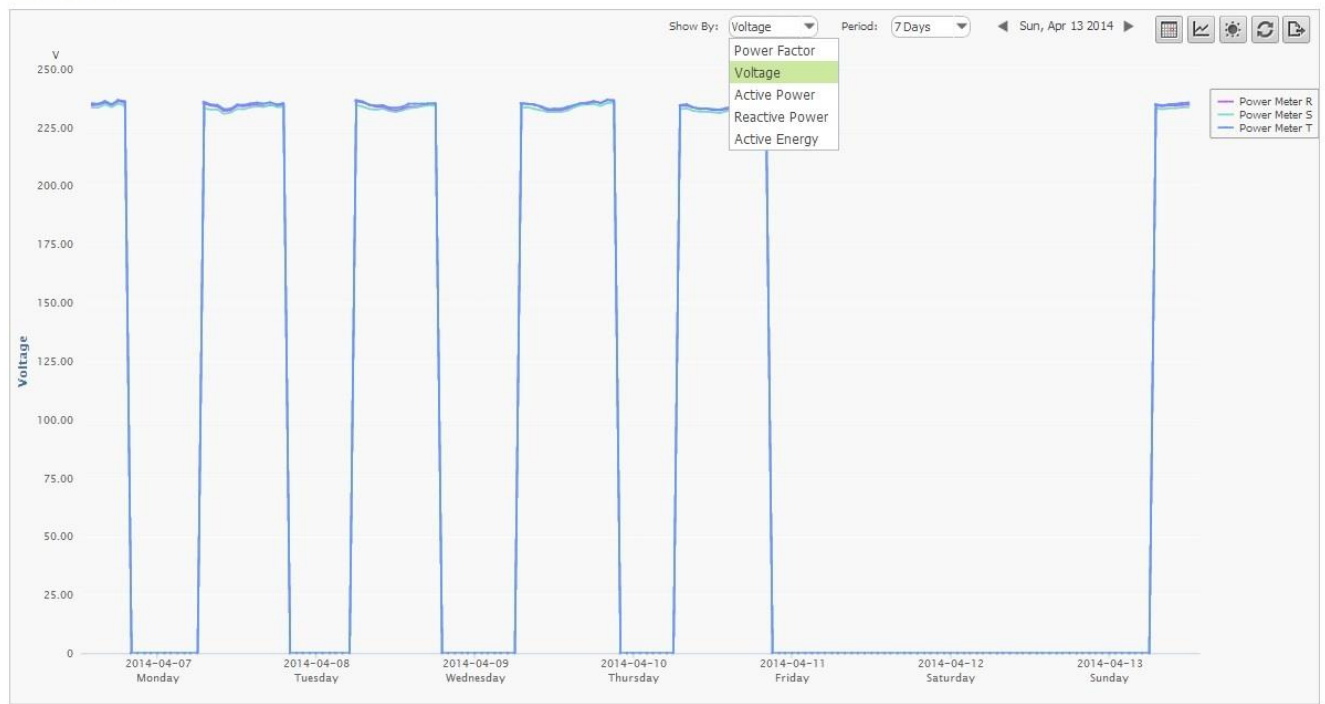
In addition to the ready-made standard lines, you can create your own customized lines using a new screen under **Sites Management**.



## Power Meters

This version supports the newly developed PAN-42 power sensors. If your site is equipped with PAN-42 devices, you can now access additional types of data, such as real-time voltage, power factor, active and reactive energy, and revenue grade kWh details. This information is available on the new **Power Meter** screen.

Power Meters



## Filtering Rules

The filtering feature that was available for Alerts in previous versions is now available for Rules as well. The filtering procedure is identical.

## Sorting Rules and Alerts

The rule and alert sorting feature that, in previous versions, applied to the currently displayed rows only, has now been extended to cover all of the records.

## Percentage Display

For energy and cost, you can now show the values as percentages. A toggle button allows you to quickly change the display to absolute values and percentage values. This allows you to better understand the cost or energy breakdown.